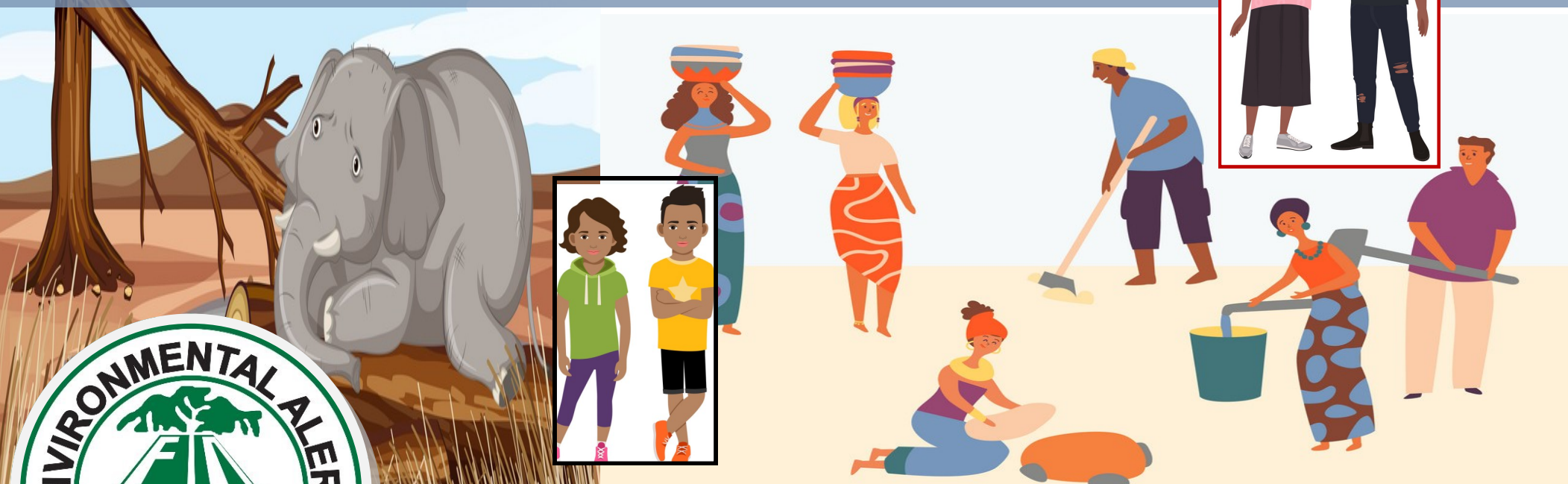
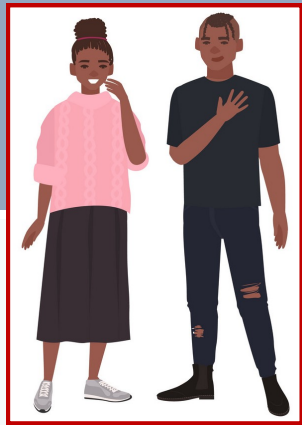
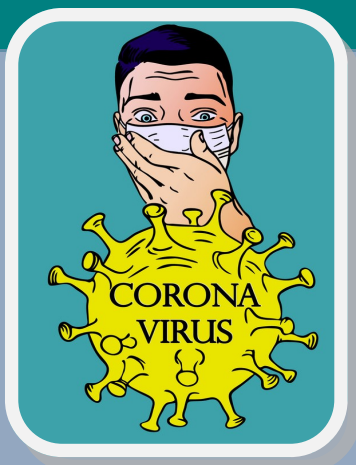


COVID-19 pandemic will escalate vulnerability to climate change impacts, especially for women, youth, boys & girls and the refugees. COVID-19 response and recovery plans should integrate responsive climate adaptation interventions to support resilience to climate change impacts by the vulnerable groups!



Environmental Alert, P.O. Box 11259,
Kampala-Uganda, Website: envalert.org.
Tel: 256-(0412)-510 215/ 510 547;
E-mail: ed@envalert.org

