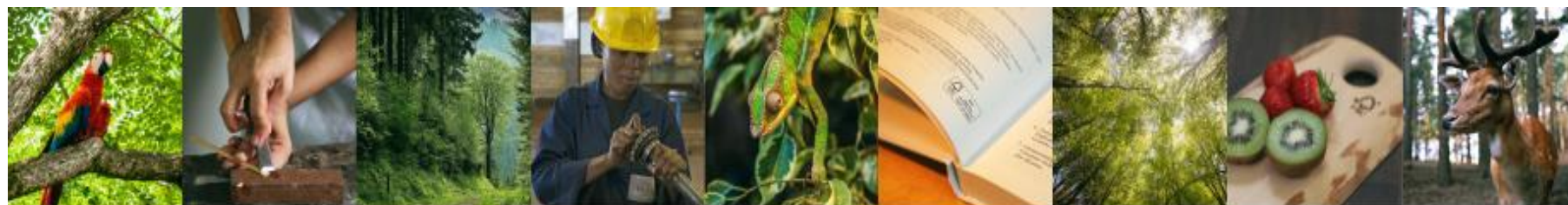




MINISTRY OF WATER AND ENVIRONMENT



# The role of FSC in promoting Responsible Forest Management through National Standards

Stakeholders Workshop for developing  
Roadmap for Uganda's NFSS

Harrison O Kojwang, Regional Director FSC Africa

[h.kojwang@fsc.org](mailto:h.kojwang@fsc.org)

27 March 2019, Kampala, Uganda



# Overview of Africa



- Forests cover ~ 23% of Africa
- +600 million ha's Classified as Forest Cover
- +160 million ha's Designated as Production Forest
- 5 Countries make 55% of Forest Cover
- 80-90% of the wood use is for local woodfuel
- Estimated net annual loss of 2.8 million ha's of forests in 2010-2015
- 4 of Global Top 10 Countries with greatest annual forest area reduction found in Africa
- ~79 million ha's committed to Forest Restoration by 23 countries
- 5% Production Forest FSC certified

# Africa's forest sector in a global context



- Production of roundwood - estimated at 688 million M3 of which only 63 million (less than 10%) is industrial, the rest being fuelwood – the bulk of which is not sustainably produced (FAO 2014)
- While exports have increased tremendously to emerging economies of the East (mostly China – from 35% in 2000 to 78% by 2009, IIED 2014) – it has spurred significant levels of illegal harvesting and exports – low value to producing countries
- while the rest of the world derives between 67 % and 80% of their economic value from value added processing, Africa instead derives the majority of its value from primary production - logging and fuelwood collection
- While Africa holds 17% of global forest cover, its share of the global value is a mere USD 17 billion (2.8%) compared to a global total of USD 606 billion (FAO 2014, State of the World's Forests)
- On trade in non-wood forest products (NWFPs), Africa's share of economic value is about 10% of what Asia and Oceania earns – mostly because Africa's products tend to be undervalued and under-reported.
- It is worth noting that Asia and Latin America, have seen spectacular inflows of foreign direct investments (FDIs) in the forest sector and much less overseas development assistance funds (ODAs), Africa remains the only region where ODA is much higher than FDI



## Who is FSC?

The world's most trusted sustainable forest management solution to deliver positive impacts for the forests, markets, and people - for today and tomorrow.



# What we do

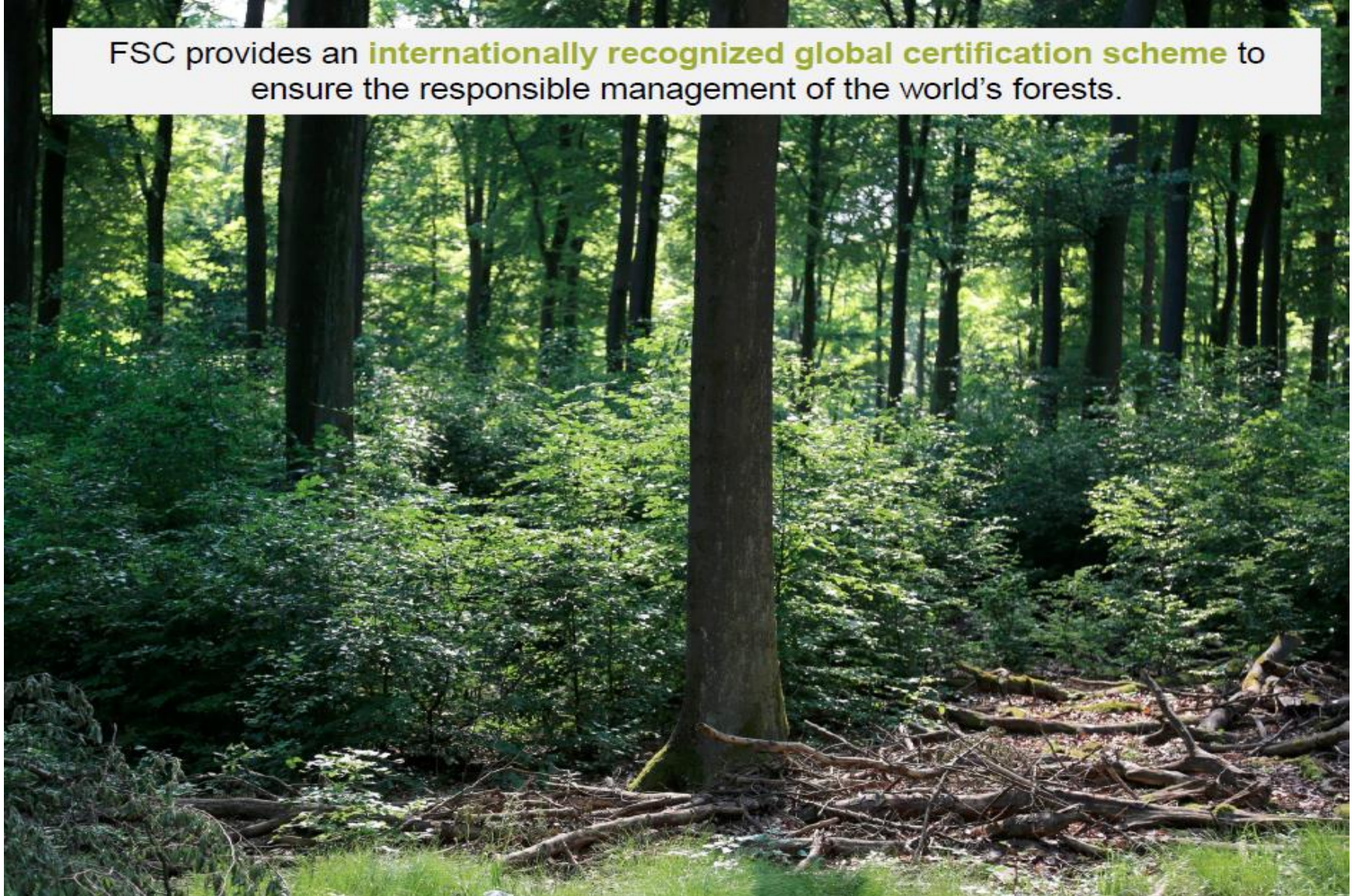


- **OUR VISION**
- Meeting the rights and needs of the present
  - generation
- without compromising those of future generations





FSC provides an **internationally recognized global certification scheme** to ensure the responsible management of the world's forests.



## FSC does this through:



**Setting standards** that reflect agreed principles for responsible forest management

An **accreditation/certification system** that monitors adherence to FSC standards

A **product labelling system** that rewards responsible forest managers.





# BASED ON THE 10 FSC PRINCIPLES OF FOREST MANAGEMENT



- **PRINCIPLE 1: COMPLIANCE WITH LAWS**
  - Comply with applicable laws, regulations, treaties, conventions and agreements.
- **PRINCIPLE 2: WORKERS' RIGHTS AND EMPLOYMENT CONDITIONS**
  - Maintain or enhance the social and economic wellbeing of workers
- **PRINCIPLE 3: INDIGENOUS PEOPLES' RIGHTS**
  - Identify and uphold indigenous peoples' legal and customary rights of ownership, use and management of land, territories and resources affected by forest management activities.
- **PRINCIPLE 4: COMMUNITY RELATIONS**
  - Contribute to maintaining or enhancing the social and economic wellbeing of local communities.
- **PRINCIPLE 5: BENEFITS FROM THE FOREST**
  - Efficiently manage the products and services of the managed forest area to maintain or enhance long-term economic viability and the range of environmental and social benefits.
- **PRINCIPLE 6: ENVIRONMENTAL VALUES AND IMPACTS**
  - Maintain, conserve and/or restore ecosystem services and environmental values of the forest area.
  - Avoid, repair or mitigate negative impacts.
- **PRINCIPLE 7: MANAGEMENT PLANNING**
  - Align the management plan with the scale, intensity and risks of activities. Ensure there is documentation to guide staff, inform stakeholders and justify management decisions.
- **PRINCIPLE 8: MONITORING AND ASSESSMENT**
  - Show that progress towards achieving objectives, impacts of activities and condition of the managed area are assessed and adapted in line with scale, intensity and risk of activities.
- **PRINCIPLE 9: HIGH CONSERVATION VALUES**
  - Maintain and/or enhance high conservation values in the managed forest area.
- **PRINCIPLE 10: IMPLEMENTATION OF MANAGEMENT ACTIVITIES**
  - Select and implement management activities that are in line with economic, environmental and social policies and objectives.



# It is that Flexible



...the global standards can be adapted to developing relevant regional, national or sub national indicators taking local conditions into account



Forest Stewardship Council®



## The FSC National Forest Stewardship Standard of the Republic of Uganda

March 2018

## National Standards are basis for:



- Delivering a clear, stable, and reasonable framework for Responsible Forest Management.
- Providing greater clarity for forest Managers on how to meet FSC requirements.
- Local expertise with the FSC system.
- Promoting Responsible Forest Management.
- Achieving economic, social and environmental benefits.
- An internationally recognised system of forest certification for the countries.



Forest Stewardship Council®



**The FSC National Forest Stewardship  
Standard of the Republic of Uganda**

March 2018



## **National Standards emphasize; environmental, social and economic safeguards**



- Legality –Compliance with laws
- Health and safety practices.
- Gender equality.
- Land tenure security.
- Biodiversity protection.
- High Conservation Values.
- Conflict resolution mechanisms, benefit sharing;  
land tenure rights.
- Management planning.



## WHERE WE ARE globally



- > 1000 international members
- FSC has in total around 300 staff
- 6 regional offices
- 48 Network Partners worldwide
- >195 million hectares certified
- >36,000 COC certificates
- 80,000 main product group registrations
- 1,602 FM/CoC certificates
- +/- 160,000 smallholders worldwide
- FSC certificates are issued in 124 countries
- 36 Certification Bodies Worldwide



## WHERE WE ARE : Africa



- ✓ **130** international members in 20 countries
- ✓ **07 FSC** staff members
- ✓ **Over 7 million hectares** certified
- ✓ **186 COC** certificates in 18 countries
- ✓ **51 FM/CoC** certificates in 12 countries
- ✓ **9 countries are** with active Chamber Balanced Standard Development Groups

### Uganda

- ✓ **05** international members
- ✓ 01 FSC **Focal point**
- ✓ **Over 40,000 ha** certified-only plantations
- ✓ **03 FM/CoC** certificates
- ✓ **An active** Chamber Balanced Standard Development Groups

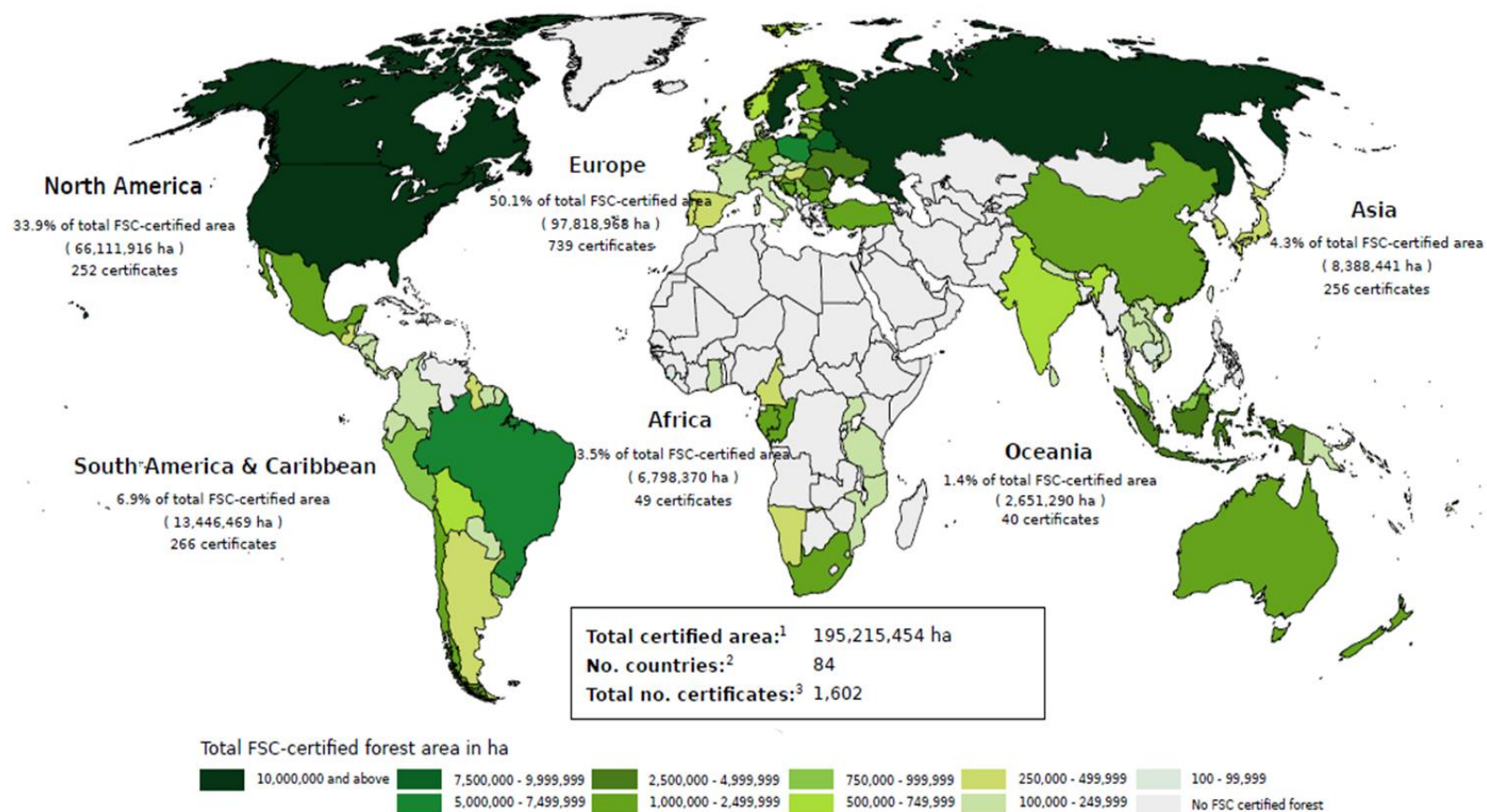
## Eastern Africa : Priorities in 2019-2020



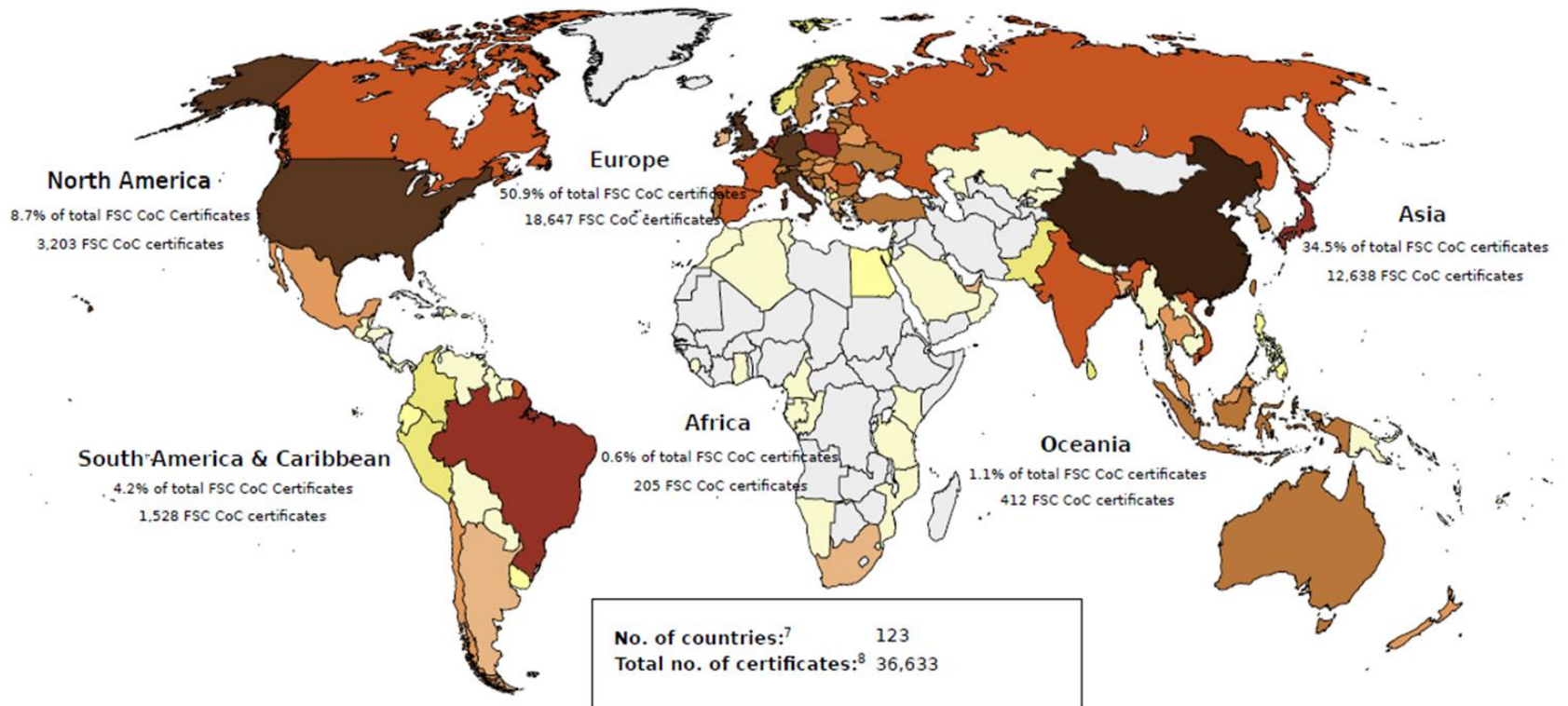
- Certifying government forests in East Africa
- Engagement with large and small scale players in sustainable intensification in forest practice e.g. bamboo, small scale forest plantations
- Influencing procurement policies to recognize and support certified products
- Market match-making and stimulation in key segments
- Explore market potential in plywood & veneer, and gums & resins
- Promoting application of legality principles – on timber trade



## Global FSC-certified forest area



## Global FSC Chain of Custody certificates



### Number of FSC CoC certificates



# TEN REASONS TO CHOOSE FSC®



## 1. WE'RE GOVERNED BY OUR MEMBERS

We're democratically governed, and over 800 social, economic, and environmental members help us to set the right policies to protect the world's forests.



## 2. WE HAVE THE HIGHEST STANDARDS

We set higher standards than any other timber certification scheme, which gives users the best assurance that certified forests are being managed responsibly.



## 3. WE'RE RESPECTED AND CREDIBLE

We are the preferred certification scheme for business and the one most widely used by members of the Fortune 500.



## 4. OUR IMPACT IS FAR-REACHING

Operating in over 100 markets, we issue more certificates globally than any other timber certification scheme.



## 5. WE HAVE A POSITIVE IMPACT

Of any existing forest certification scheme, we provide the highest level of protection for endangered species and natural forests.



## 6. WE HAVE INFLUENTIAL SUPPORT

Our membership includes the world's largest and most respected environmental NGO's such as Greenpeace and WWF, both of which are vocal in their support of FSC over others.



## 7. WE'RE TRANSPARENT

Every process and decision we make is open to public review and our product claims are independently audited.



## 8. OUR STANDARDS ARE THE SAME, THE WORLD OVER

Wherever we operate in the world, our standards are based on the same principles and criteria.



## 9. WE THINK LOCAL

Every FSC forest certification process is open to local consultation so the people who live there can always have their say.



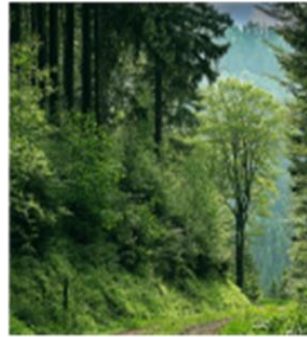
## 10. WE'RE RECOGNISED

FSC is the only timber certification scheme recognised by LEED Green Building Certification and is a member of ISEAL Alliance, the global association for sustainability standards.





Thank you



**25**  
Years of  
making  
a difference  
1994 - 2019

Forest Stewardship Council®

FSC® Global Development

Adenauerallee 134, 53113 Bonn, Germany

T +49 (0) 228 367 66-0

F +49 (0) 228 367 66-30

FSC Global Development ©All rights reserved

FSC® F000100

[ic.fsc.org](http://ic.fsc.org)

